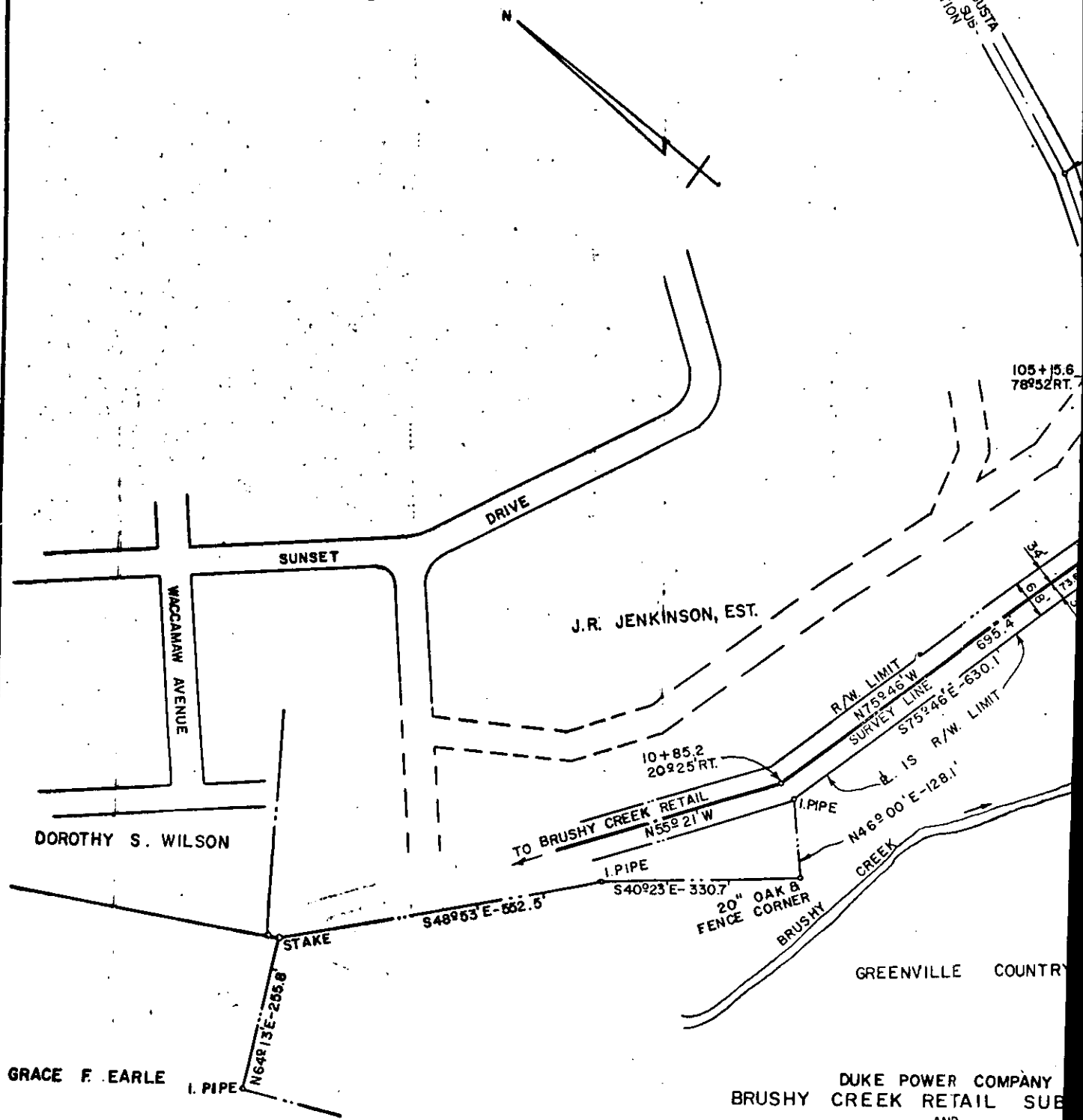


TO AUGUSTA
ROAD 8.15
STATION

105+15.6
78952RT.



NOTE: REVISED 9-13-68

DUKE POWER COMPANY
 BRUSHY CREEK RETAIL SUB
 AND
 RELOCATION OF OAKVALE-AUGUSTA
 TRANSMISSION LINES
 ACROSS PROPERTY OF
 J.R. JENKINSON, EST
 AND
 GREENVILLE COUNTRY
 GREENVILLE, S.C.
 GREENVILLE COUNTY

(Continued on next page)

SCALE: 1" = 200'
BOOK NO. 809

JUN
FIL